



OUR FAMILY OF BRANDS.



HYBRID RESILIENT LOCKING INSTALLATION SYSTEM

THANK YOU FOR CHOOSING AHF PRODUCTS FLOORING

If properly installed and cared for your new flooring will be easy to maintain and will look great for years to come. If you have questions or comments, please visit us at www.ahfproducts.com or 1 866-243-2726. These directions are based on industry standards and best practices. Failure to follow these installation instructions may result in damage to the flooring and void the floor's warranty.

- For complete warranty information call 1-866-243-2726 or go to www.ahfproducts.com.
- For technical or installation questions, or to request a Safety Data Sheet, please call 1-866-243-2726 or visit www.floorexpert.com our technical website.
- For general questions or comments, please visit us at www.ahfproducts.com or call 1-866-243-2726.

WARNING: REGARDING EXISTING IN-PLACE RESILIENT FLOOR COVERING AND ASPHALTIC ADHESIVES. DO NOT SAND, DRY SWEEP, DRY SCRAPE, DRILL, SAW, BEADBLAST OR MECHANICALLY CHIP OR PULVERIZE EXISTING RESILIENT FLOORING, BACKING, LINING FELT, ASPHALTIC "CUTBACK" ADHESIVE OR OTHER ADHESIVE.

These existing in-place products may contain asbestos fibers and/or crystalline silica.

Avoid creating dust. Inhalation of such dust is a cancer and respiratory tract hazard.

Smoking by individuals exposed to asbestos fibers greatly increases the risk of serious bodily harm.

Unless positively certain that the existing in-place product is a non-asbestos-containing material, you must presume it contains asbestos. Regulations may require that the material be tested to determine asbestos content and may govern removal and disposal of material.

Visit rfci.com to see the current edition of the Resilient Floor Covering Institute (RFCI) publication *Recommended Work Practices for Removal of Resilient Floor Coverings* for instructions on removing all resilient floor covering structures or contact your retailer.

AHF floor coverings and adhesives do NOT contain asbestos.

IMPORTANT HEALTH NOTICE FOR MINNESOTA RESIDENTS ONLY:

THESE BUILDING MATERIALS EMIT FORMALDEHYDE. EYE, NOSE, AND THROAT IRRITATION, HEADACHE, NAUSEA AND A VARIETY OF ASTHMA-LIKE SYMPTOMS, INCLUDING SHORTNESS OF BREATH, HAVE BEEN REPORTED AS A RESULT OF FORMALDEHYDE EXPOSURE. ELDERLY PERSONS AND YOUNG CHILDREN, AS WELL AS ANYONE WITH A HISTORY OF ASTHMA, ALLERGIES, OR LUNG PROBLEMS, MAY BE AT GREATER RISK. RESEARCH IS CONTINUING ON THE POSSIBLE LONG-TERM EFFECTS OF EXPOSURE TO FORMALDEHYDE.

REDUCED VENTILATION MAY ALLOW FORMALDEHYDE AND OTHER CONTAMINANTS TO ACCUMULATE IN THE INDOOR AIR. HIGH INDOOR TEMPERATURES AND HUMIDITY RAISE FORMALDEHYDE LEVELS. WHEN A HOME IS LOCATED IN AREAS SUBJECT TO EXTREME SUMMER TEMPERATURES, AN AIR-CONDITIONING SYSTEM CAN BE USED TO CONTROL INDOOR TEMPERATURE LEVELS. OTHER MEANS OF CONTROLLED MECHANICAL VENTILATION CAN BE USED TO REDUCE LEVELS OF FORMALDEHYDE AND OTHER INDOOR AIR CONTAMINANTS. IF YOU HAVE ANY QUESTIONS REGARDING THE HEALTH EFFECTS OF FORMALDEHYDE, CONSULT YOUR DOCTOR OR LOCAL HEALTH DEPARTMENT.

Installation:

Location: All grade levels

Tools:

Tapping Block, Pull Bar, Rubber Mallet, Utility Knife, Saw, Multifloor cutter, Spacers, Cyanoacrylate glue (CA glue) when joint gluing is required), 100% Silicone Caulk (Wet areas such as kitchens or bathrooms)

OPTIONAL (Add for Glue-Down Installations):

Recommended adhesive and adhesive remover, Recommended Trowel, Scotch® Delicate Surface Painter's Tape 2080

General Information:

Owner/Installer Responsibility

- The owner/installer has final inspection responsibility as to grade, manufacture and factory finish. Inspection of all flooring should be done prior to installation. The flooring should also be carefully examined for color, finish and quality before installing it.
- The installer must use reasonable selectivity and not use or cut off pieces with deficiencies, whatever the cause. Should an individual piece be doubtful as to grade, manufacture or factory finish, the installer should not use that piece. If material is not acceptable, do not install it and contact the seller immediately.
- Prior to installation of any flooring product, the owner/installer must determine that the job-site environment and the sub-surfaces involved meet or exceed all applicable standards. Recommendations of the construction and materials industries, as well as local codes, should be followed. These instructions recommend that the construction and subfloor be clean, dry, stiff, structurally sound and flat. The manufacturer declines any responsibility for job failure resulting from, or associated with, subfloor and substrates or job-site environmental deficiencies.
- The locking installation system allows the planks to be installed without using adhesive. It is a floating floor installation. The planks should be installed 1/4" away from all vertical objects such as walls, cabinets, pipes, etc.
- When installed in bathrooms, the gap should be filled and sealed with a good quality siliconized caulk. The gap can then be covered with molding or wall base. Base cabinets should not be installed on top of the planks.

(OPTIONAL) Adhesives:

If a full spread glue down installation is desired with the flooring, use Bruce TuffLink or a similar pressure sensitive adhesive with the recommended trowel found on the pail. Follow the manufacturer's instructions for the adhesive application.

Keys to Successful Locking Installation:

- Most installations will need approximately a 10% cutting allowance added to the square footage of the room.
- Proper conditioning of the job site is necessary. Flooring planks should not be exposed to sudden changes in temperature.
- Store, transport and handle the flooring planks in a manner to prevent any damage. Store cartons flat, never on edge. Ensure that the flooring planks are lying flat during installation.
- Installations of carpet, metal strips and other transition moldings should not pinch the flooring against the subfloor, and should allow for some slight movement wherever practical.
- Protect the floor from heavy-rolling loads, other trades, and movement of appliances by using sheets of plywood or similar.
- **Acclimation of this product is not required**, although it is best to store these products in the environment in which it is expected to perform prior to installation. Check adhesive label for adhesive storage limitations.

Suitable Substrates

All substrates listed below must be properly prepared and meet certain requirements. There may be other exceptions and special conditions (as noted below) for these substrates to be suitable for the locking installation system.

- Concrete – dry and smooth on all grade levels
 - All concrete subfloors should be tested, and results documented, for moisture content. Visual checks may not be reliable. Test several areas, especially near exterior walls and walls containing plumbing. Acceptable test methods for subfloor moisture content include:
 - **Tramex Concrete Moisture Encounter Meter** (Figure 1): Moisture readings should not exceed 4.5 on the upper scale. (Figure 3 shows an unacceptable reading of over 4.5) Concrete Moisture Meters give qualitative reading results-not quantitative ones. These results are a quick way to determine if further testing is required.
 - **Calcium Chloride Test (ASTM F 1869)**: The maximum moisture transfer must not exceed 3 lbs./1000 ft.² in 24 hrs. With this test.
 - **RH Levels in Concrete Using In-situ Probes (ASTM F 2170)** should not exceed 75%.

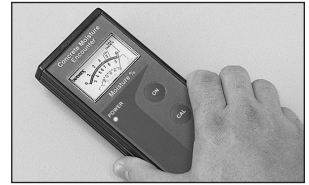


Figure 1

- Suspended wood subfloors with approved wood underlays – must have minimum of 18" well-ventilated crawl space underneath
- Suspended hardwood flooring that is fully adhered, smooth and square edge without texture
 - The flooring should be installed perpendicular to the direction of the existing wood floor
- Single-layer, fully-adhered, existing resilient floors – must not be foam-backed or cushionbacked
- Ceramic tile, Terrazzo, Marble
- Polymeric Poured (seamless) Floors
- OSB-3/4"
- Particleboard 40lb. density or waferboard

DO NOT INSTALL OVER:

- Existing resilient tile floors that are below grade
- Existing cushion-backed vinyl flooring
- Carpet
- Hardwood flooring installed directly over concrete
- In rooms with sloping floors or floor drains
- Existing floating floors

Job Conditions/Preparations:

Subfloor Conditions

Floating floors may be installed over any subfloor that is structurally sound, flat, clean and dry on all grade levels. All substrates must meet or exceed all applicable building codes and be:

- **CLEAN** – Subfloor must be free of wax, paint, oil, sealers, adhesives and other debris.
- **FLAT** – Within 3/16" in 10' (5 mm in 3 m) and/or 1/8" in 6' (3 mm in 2 m). Sand high areas or joints. Fill low areas with a latex additive cementitious leveling compound of 3,000-PSI minimum compressive strength. Follow the instructions of the leveling compound manufacturer. Leveling compounds must be tested for moisture to ensure they are within the specified requirements for proper installation.
- **DRY** – Check and document moisture content of the subfloor using the appropriate moisture test. Moisture content of wood subfloors must not exceed 12% on a wood moisture meter.
- **STRUCTURALLY SOUND** – Nail or screw any loose areas that squeak. Wood panels should exhibit an adequate nailing pattern. A typical pattern is 6" (15 cm) along bearing edges and 12" (30.48 cm) along intermediate supports. Flatten edge swell as necessary. Replace any water-damaged, swollen or delaminated subflooring or underlays.

Subfloors with excessive vertical movement should be avoided. Optimum performance of the Hybrid Resilient plank floor covering products occurs when there is little horizontal or vertical movement of the subfloor. If the subfloor has excessive vertical movement (deflection) before installation of the flooring, it is likely it will do so after installation of the flooring is complete.

- It is necessary to maintain a constant temperature before, during and after the installation.
- All substrates must be structurally sound, dry, clean, flat, and smooth with minimal deflection. Substrates must be free from excessive moisture or alkali. Remove dirt, paint, varnish, wax, oils, solvents, and other foreign matter, and contaminants.
 - Subfloors must be flat within 3/16" in 10' or 1/8" in 6'
 - For concrete substrates, moisture testing should be conducted. Acceptable levels are determined by the adhesive being used. Check adhesive label for limitations.
- High spots on the substrate should be leveled and low areas filled with appropriate underlays.
- Do not use products containing petroleum, solvents, or citrus oils to prepare substrates as they can cause staining and expansion of the new flooring.
- For renovation or remodel work, remove any existing adhesive residue so that 100% of the overall area of the original substrate is exposed.
- Ceramic tile floors, ceramic and marble grout joints, and irregularities in concrete should be filled and leveled using a cementitious patch to fill and smooth any embossing in the old floor.
- The area to receive the flooring materials and adhesives should be maintained between 50°F (10°C) and 90°F (32°C) for 24 hours before, during, and 24 hours after installation. Maintain minimum temperatures between 0°F (-18°C) and 170°F (77°C) thereafter. Relative humidity should be maintained between 25% and 70%
- Radiant heated substrates must not exceed a maximum surface temperature of 85°F (29°C).
- The subfloor panels must have a smooth, sanded face and show no swelling of edges or surface due to exposure to weather conditions or construction traffic.
- There are numerous products available for use as floor fills, patches, self-leveling underlays, and trowelable underlays. They include proprietary blends of compounds such as Portland cement, calcium aluminates, and gypsum-based products. These are recommended by their manufacturers for smoothing rough or uneven subfloors, enhancing acoustical and fire characteristics of structures or as substrates to receive floor covering for otherwise unsuitable subfloor conditions. If the subfloor surface appears to be dusty then apply a primer to the surface.

Safety and Clean Up:

Wet adhesive should be cleaned up immediately with soap and water on a clean cloth. Dried adhesive may require the use of a solvent-based adhesive cleaner.

Installation Preparation:

Before You Start

- Before installing the planks, heat or air conditioning should be operating for 14 days.
- In rooms with under-floor (radiant) heating, the surface temperature of the subfloor may not exceed 85°F (29°C). Increasing heat should be done in 10-degree increments. Ascertain that the subfloor is properly engineered or controlled for the flooring being installed. Subfloors designed for materials with higher resistance to heat transfer, such as carpet, WILL damage the flooring. Installations that include multiple floor covering products on a single heating circuit must be adjusted for the flooring product with the highest heat transfer or lowest temperature requirement.
- When possible, preselect and set aside boards that blend best with all horizontally mounted moldings (reducer/stair nose etc.) This will assure a uniform final appearance. Install these boards adjoining the moldings.
- Floor should be installed from several cartons at the same time to ensure good color and shade mixture.
- Be attentive to staggering the ends of the boards at least 12" (30.48 cm) when possible, in adjacent rows. This will help ensure a more favorable overall appearance of the floor.

STEP 1: Doorway and Wall Preparation (All Installations)

- Undercut door casings and jambs. Remove any existing base, shoe mold or doorway thresholds. These items can be replaced after installation. When undercutting door casings, include the recommended expansion space. The floor must have 1/16" clearance under the door casing to be able to float freely without vertical restriction (Floating installations).

STEP 2: Plan Your Layout Using the Following Steps (All Installations)

- Decide the direction of the floor installation in the room. Planks installed parallel to windows accent the floor the best. Floors should be installed perpendicular to the floor joists. Stiffen subfloors as necessary to prevent vertical movement.
- Plan your installation so each plank is at least 12" (30.48 cm) long and that the first and last row are at least 2.5" (6.35 cm) wide.
- Note: If your room exceeds a maximum room width of 100' (30.48 m) or a maximum room length of 100' (30.48 m) additional 1/4" of expansion space is required. T- Molding may be used at doorways or intersections to increase the expansion space. (Floating Installations only).

STEP 3: Installing First Row

- Begin on the left side of the room and work right.
- Lay the first full piece with the small, tongue side facing the wall (Fig. 2).
- Install second and subsequent full pieces in the first row by aligning short ends of boards and locking into place (Fig. 3).
- Use spacers along all sides that butt up against walls to maintain a 1/4" (6.35 mm) expansion zone (Figs. 3 & 4).
- Continue laying boards in the first row until you need to cut the last piece.
- Measure the distance between the wall and the face surface of the last board. Subtract 1/4" (6.35 mm) and cut the board. (See cutting instructions above.)
- If this distance is less than 12" (30.48 cm) go back to the first full plank and cut approximately 12" (30.48 cm) from the end closest to the starting wall. This will leave a longer piece at the end of the first row.

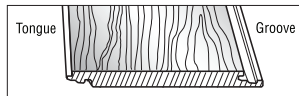


Figure 2

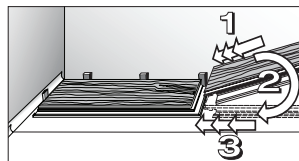


Figure 3

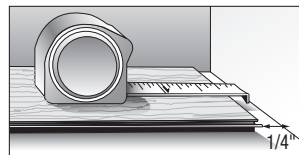


Figure 4

Installing Remaining Rows

- Begin the second row of planks with the piece cut from the last piece in the first row. If the piece is shorter than 12" (30.48 cm), cut a new plank in half and use it to begin the second row. Whenever practical, use the piece cut from the

preceding row to start the next row. End joints of all boards should be staggered a minimum of 12" (30.48 cm) or more.

- Install the long end of the first board and lock in place, keep this board at its natural angle slightly raised off the subfloor (Fig. 5). Use a scrap piece of the flooring to support the row if needed.
- Continue installing full boards in the second row by angling the short end of the next board in the row to lock into the previous board (Fig. 6). Position the board so that the long side of the board is close to boards in the previous row and overlapping the groove of the boards in the previous row.
- Continue installing full boards in the second row in the same fashion to lock into the previous board (Fig. 6). Position the board so that the long side of the board is close to boards in the previous row and overlapping the groove of the boards in the previous row.
- Angle up and push forward until the boards lock together. A tapping block may be necessary to lock in place (Fig. 7).
- Continue installing full boards in the second and subsequent rows until you reach the wall on your right.
- Mark the last piece, cut and install. After all boards in the row are installed, press or walk all boards flat to the subfloor to begin the next row (Fig. 9).
- Use a pull bar when necessary to ensure joints are tight (Fig. 9).

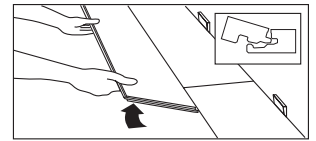


Figure 5

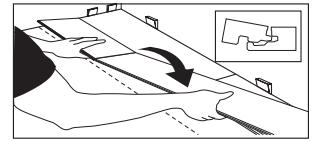


Figure 6

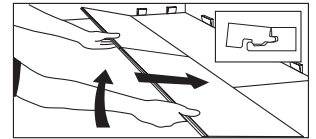


Figure 7

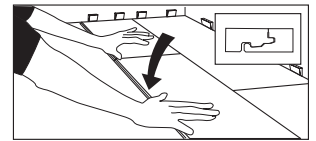


Figure 8

Installing the Last Row

- Place the row of planks to be fit on top of the last row of installed planks. Use a piece of the plank as a scribe to trace the contour of the wall (Fig. 10).
- Be sure to place a spacer between the pencil and "scribe" piece of board. This adds the 1/4" (6.35 cm) expansion space.

Installing Under a Door Jamb

- Installations of locking floors under moldings, such as a door jamb, may require that the top lip of the groove on the end be reduced in size.
- Using a small plane or knife plane, shave off the ledge of the groove.
- After the groove edge has been trimmed, place the board into place and tighten with a pull bar to test for fit. Maintain the proper expansion spacelfit is incorrect, trim as necessary. Remove any wax from the end joint to ensure good adhesion.
- Place a bead of cyanoacrylate glue on the bottom lip of the groove.
- Reinsert the tongue into the groove and tighten the board with a pull bar. Hold the board in place with painter's tape (Scotch® Delicate Surface Painter's Tape 2080) until the glue is dry. Do not use masking tape or duct tape, as the surface may be damaged.

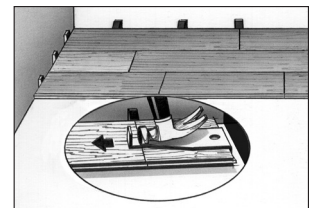


Figure 9

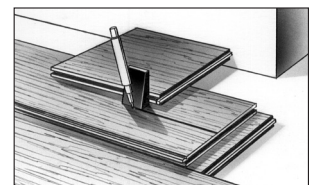


Figure 10

Installing in Kitchens or Bathrooms

- Prolonged exposure to water could damage the flooring. Installation and maintenance recommendations should be closely followed to prevent water from contacting the core material of the flooring.
- Joint integrity is integral to moisture resistance. Avoid excessive joint flexing during installation.
- All perimeter expansion zones must be filled and sealed with 100% silicone caulk following the manufacturer's recommendations. When applying caulk, it is helpful to first apply a strip of painter's tape (Scotch® Delicate Surface Painter's Tape 2080) parallel to and approximately 1/32" (.79 mm) from the edge of the flooring (Fig. 11). Then fill the expansion zone with caulk, remove the excess with a plastic scraper or putty knife and remove the tape.
- Molding may be used along a straight tub or shower base (Fig. 12). The expansion zone should be filled with 100% silicone caulk and the molding seated in the caulk while it is still wet. The joint between the molding and the tub or shower base should also be caulked.
- If molding is not an option, a normal 1/4" (6.35 mm) expansion zone may be used at the tub and then completely filled with 100% silicone caulk.
- The toilet should be removed before installing the flooring. Allow a 1/4" (6.35 mm) expansion zone between the flooring edge and the toilet flange. Completely seal the zone with 100% silicone caulk.

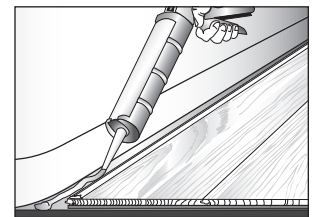


Figure 11

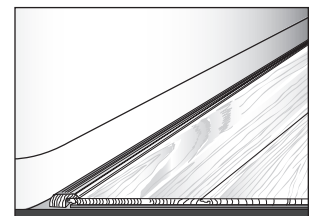


Figure 12

OPTIONAL - Glue Down Installation:

General Information for Glue-Down Applications

NOTE: DO NOT INSTALL FLOORING USING RUBBER MALLETS. STRIKING THE SURFACE WITH A RUBBER Mallet MAY "BURN" THE FINISH CAUSING IRREPAIRABLE DAMAGE.

- When not in use, keep the adhesive container tightly closed to prevent thickening. Thickening will cause difficulty in spreading the adhesive.
- Open times and curing times of ALL adhesives vary dependent upon subfloor porosity, air movement, humidity and room temperature. Urethane adhesive has a shortened working time in high humidity environments. In areas of low humidity, open time will be longer with urethane adhesives and shorter with some adhesives. Adjust the amount of adhesive spread on the subfloor accordingly. The adhesive should

not be applied if subfloor or room temperature is below 60°F (16°C). WORKING TIME WILL VARY DEPENDING ON JOB SITE CONDITIONS.

- Hold trowel at a minimum 45° angle (Figure 13) firmly against the subfloor to obtain proper spread rate per gallon.
- For additional application instructions, follow the recommendations on the adhesive container.
- Ensure proper ventilation within the room. An electric fan is helpful. Position the fan so it does not blow directly on the adhesive.

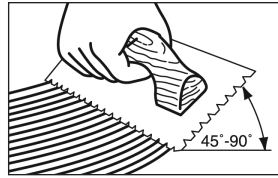


Figure 13

STEP 3: Spread the Adhesive

- Spread the recommended adhesive with the proper trowel in an area that can be covered within the working time of the adhesive. Be sure not to spread adhesive too far ahead of your work area (Figure 14).

NOTE: Avoid kneeling on the surface of installed flooring. If necessary, distribute weight using a kneeler board.

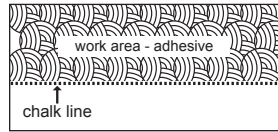


Figure 14

STEP 4: Installing the Floor

- Select a board to begin installation of the first row using the longest boards available.
- Starting from the LEFT with the tongue facing the wall, carefully place the first board in place. Use 1/4" (6.35 mm) spacers along the wall to hold plank in place while allowing the required expansion space.
- Install second and subsequent full pieces in the first row by aligning short ends of boards and locking into place.
- Continue to place 1/4" (6.35 mm) spacers as necessary to restrain movement and maintain expansion zone.
- Continue in this manner until the first row is complete.
- Cut the final board to length allowing the necessary expansion zone.
- Install second row and subsequent rows using the locking installation method above.
- During the installation occasionally remove a piece of flooring from the subfloor and inspect the back for proper adhesive transfer. Adequate adhesive transfer is necessary to ensure sufficient holding strength.
- If the adhesive skins over and fails to transfer, remove and spread new adhesive to achieve proper bonding.

NOTE: Clean adhesive from the surface of the floor frequently, using the recommended adhesive cleaner. Use clean towels, changed frequently, to prevent haze and adhesive residue.

- Check for a tight fit between all edges and ends of each plank. End-joints of adjacent rows should be staggered a minimum of 12" (30.48 cm) when possible, to ensure a more favorable overall appearance (Figure 15).
- It may be necessary to align the product with a cut-off piece of scrap as shown (Figure 16 - Keep scrap angle low to avoid edge damage).
- If necessary, use weights to flatten boards with bows until adhesive cures, to prevent hollow spots. Boards that cannot be flattened should be cut in length to reduce the bow, or not used.
- Roll and cross roll the floor with a 75-100 lb. roller within one hour of the installation. Reroll the floor in two hours to ensure proper transfer of the adhesive.
- Avoid heavy foot traffic on the floor for a period of 6-12 hours. Lift the furniture or fixtures back into place after 24 hours.

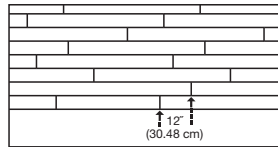


Figure 15

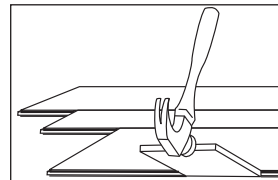


Figure 16

Completing the Installation:

- Remove all wedges and tape if used.
- Clean floor with the recommended flooring cleaner.
- If drywall dust is present, thoroughly vacuum prior to using the recommended cleaner.
- Trim all underlayment and install, or re-install, all base and/or quarter round moldings. Nail moldings into the wall, not the floor. Inspect the floor, filling all minor gaps with the appropriate blended filler.
- If the floor is to be covered, use a breathable material such as cardboard. Do not cover with plastic.
- Leave warranty and floor care information with the owner. Advise them of the product name and code number of the flooring they purchased.
- To prevent surface damage, avoid rolling heavy furniture and appliances on the floor. Use plywood, hardboard or appliance lifts if necessary. Use protective casters/caster cups or felt pads on the legs of furniture to prevent damage to the flooring.

Proactive Protection for Your Floor:

- When moving appliances or heavy furniture, lay a plywood panel, or similar, on your floor and "walk" the item across it. This protects your floor from scuffing, gouging and tears.
- Use floor protectors under furniture to reduce indentation. As a general rule, the heavier the item, the wider the floor protector needed.
- Place a walk-off mat at outside entrances to reduce the amount of dirt brought into your home. We strongly recommend mats without a latex or rubber backing since these backings can cause permanent discoloration.

Caring for Your Floor:

- Sweep or vacuum regularly, to remove loose dirt which can scratch your floor. Note: We do not recommend vacuums that have a beater bar since it can visibly damage your flooring surface. Additionally, we do not recommend electric brooms with hard plastic bottoms with no padding as use may result in discoloration and deglossing.
- Wipe up spills as soon as possible. Never use highly abrasive scrubbing tools on the floor.
- Clean your floor routinely using a cleaner such as Bruce® Multi-Surface Cleaner
- Do NOT use detergents, abrasive cleaners, or "mop and shine" products. These products may leave a dull film on your floor.
- Hybrid Resilient, like other types of smooth floors, can become slippery when wet. Allow time for floor to dry after washing. Immediately wipe up wet areas from spills, foreign substance, or wet feet.

Repair Procedure:

For detailed repairs, please log on to AHF Products www.floorexpert.com