

Product Information

Product Lines - Integrated Stair Treads | Landing Tiles

Style - Integrated Stair Tread - Raised Round & Hammered

Product Specifications - Integrated Stair Tread - ASTM F2169

Landing Tiles - ASTM F1700, Class 1 Type A

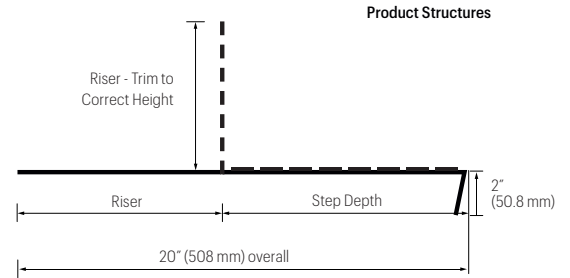
Overall Thickness - 0.125" (3.18 mm)

Installation - Integrated Stair Tread - S-726, S-727

Landing Tiles - S-288, S-315, S-726

Maintenance Options - Integrated Stair Tread - Cleaner: S-485

Landing Tiles - Cleaner: S-485, Polish: S-480



Packaging

Products	Size	Feet per Carton	Pieces per Carton
Hammered Stair Treads	20" x 48.5" (508 mm x 1232 mm)	24.25 lin. ft. (7.39 m)	6
	20" x 72.5" (508 mm x 1842 mm)	24.16 lin. ft. (7.36 m)	4
Raised Rounded Stair Treads	20" x 50.25" (508 mm x 1276 mm)	25.125 lin. ft. (7.66 m)	6
	20" x 74.25" (508 mm x 1886 mm)	24.75 lin. ft. (7.54 m)	4
Landing Tiles	12" x 12" (304.8 mm x 304.8 mm)	45 sq. ft. (4.18 m ²)	45

Testing

Performance	Test Method	Requirement	Performance vs. Requirement
Composition of Materials	Certificate of Compliance	As specified	Meets
Wear Layer Thickness	ASTM F410	≥ 0.002"	Meets
Flexibility	ASTM F137	¼ inch mandrel - no cracks or breaks in wear surface	Meets
Staining of adjacent surfaces induced by wall base	ASTM F1861 Section 12	No staining of adjacent surfaces	Meets
Resistance to Light	ASTM F1515	Max. avg. ΔE ≤ 8	Meets
Dimensional Stability	ASTM F1861 Section 12	±0.25%	Meets
Chemical Resistance	ASTM F925	No more than slight change in surface dulling, attack or staining	Meets
Height	ASTM F1861 Section 9	As specified, ±1% of nominal height	Meets
Thickness	ASTM F386	As specified, 0.080 in. +0.015/ -0.005 in. 0.25 in. + 0.015/ -0.015 in.	Meets
Length	ASTM F1861 Section 9	As specified, no less than nominal value	Meets
Additional Testing			
Fire Test Data – Flame Spread	ASTM E648	0.45 W/cm ² or more Class 1	Meets
Fire Test Data – Smoke Evolution	ASTM E662	450 or less	Meets
Fire Resistance	ASTM E84	Class II (26 - 75)	Meets

Sustainability

WELL v1 Feature	Stair Tread & Landing Tile	Contribution
Air	Feature 04 - VOC Reduction	✓
	Feature 11 - Fundamental Material Safety	✓
	Feature 99 - Beauty and Design II	✓
		Tested and third party certified by FloorScore as complying with CDPH v1.2
		Product is free of asbestos and added lead (Part 1)
		Patterns and colors to aid in wayfinding and spatial familiarity (Part 3)

Sustainability Continued

WELL v2 Feature	Stair Tread & Landing Tile	Contribution
Materials Feature X01.1 Material Restrictions	✓	Product is free of asbestos
Feature X06.1 VOC Restrictions	✓	Adhesives associated with product are tested and third party certified by FloorScore as complying with CDPH v1.2
Feature X06.2 VOC Restrictions	✓	Flooring is tested and third party certified by FloorScore as complying with CDPH v1.2
Community Feature C13 (Part 2) Accessibility and Universal Design	✓	Patterns and colors to aid in wayfinding and spatial familiarity

LEED™ v4.1

BPDO - EPD
 BPDO - Material Ingredient
 BPDO - Sourcing
 Location of Manufacturer
 Low Emitting Flooring
 Low Emitting Adhesives
 SCAQMD #1168 Compliant
 Adhesives meet >50 g/L requirement

Stair Tread & Landing Tile

Industry Average
 HPD
 29% pre-consumer recycled content
 USA
 Tested and third party certified by FloorScore as complying with CDPH v1.2
 Tested and compliant to CDPH v1.2; Methylene Chloride and Perchloroethylene not intentionally added; FloorScore Certified
 S-240 Epoxy – 10 g/L
 S-315 Roll Strong – 0 g/L
 S-980 – 14 g/L
 S-1000 – 0.1 g/L

Limited Warranty

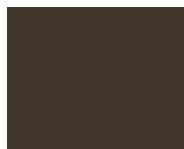
5-year Commercial Warranty when installed in strict accordance with the detailed instructions.



V8FES
R4CES | R4HES | R6CES | R6HES
Essential Sand



V8FPB
R4CPB | R4HPB | R6CPB | R6HPB
Pebble



V8FML
R4CML | R4HML | R6CML | R6HML
Molasses



V8FSW
R4CSW | R4HSW | R6CSW | R6HSW
Stonewash

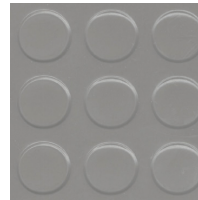


V8FSG
R4CSG | R4HSG | R6CSG | R6HSG
Smokey Gray



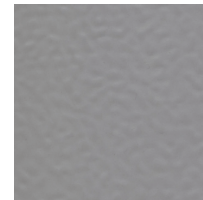
V8FEB
R4CEB | R4HEB | R6CEB | R6HEB
Ebony

Raised Round



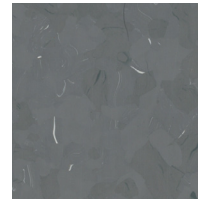
R4CSW | R6CSW
Stonewash

Hammered

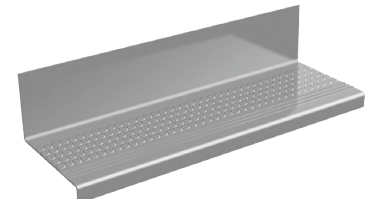


R4HSW | R6HSW
Stonewash

Landing Tile



V8FSW Stonewash



12 in. x 12 in. Landing Tile - V8FXX

4 ft. Stair Tread, Raised Round - R4CXX
 4 ft. Stair Tread, Hammered - R4HXX
 6 ft. Stair Tread, Raised Round - R6CXX
 6 ft. Stair Tread, Hammered - R6HXX

Visit ArmstrongFlooring.com

for complete Product, Technical, Adhesives, Installation & Maintenance recommendations.